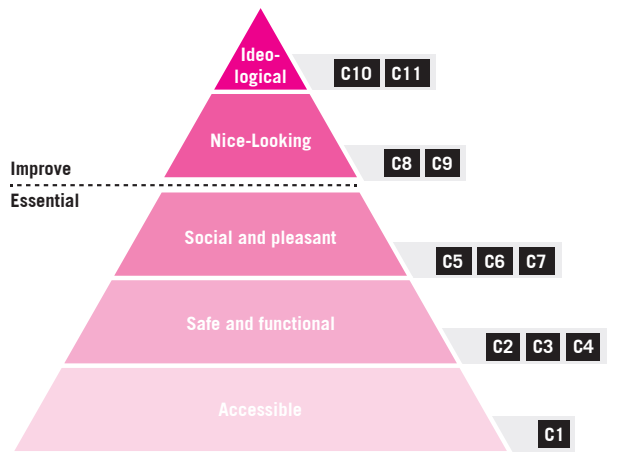


# Queensway's Succession

Implementing a natural strategy in an urban environment

Succession is natural system in which groups of vegetation create possibilities for new vegetation to flourish. The pioneering phase attracts plants and trees that are able to cope with the harsh surroundings. During their presence they create conditions for new types of vegetation to grow. For example by loosening the soil with their roots and making water more accessible.

Our proposed 'Queensway succession strategy' is based on this natural system. By changing the current situation with small transformations, new possibilities are created for people, economy, leisure, safety and urban vegetation. This means letting go of a big overall design by focusing on specific situations along the 3,5 mile long track. We call these specific situations: profiles. Our proposed local transformations are called: components.



How to read this panel  
Profile + Component + Timeline = Strategy

The entire line is divided in 25 profiles describing the DMA of that area, based on spatial aspects, quality, accessibility, etc. The matrix below depicts our suggested components (11 in total) for the individual profiles. We have zoomed in on 4 areas alongside the Queensway, often combining more than one profile. This explains in detail the component(s) possible for the designated area and the party responsible for implementation of this component. For transformation to take maximum effect, it's not recommended to transform the entire Queensway line at once. Our timeline image shows our recommendation for areas to be transformed over time.

**Strategy**  
The strategy is based on 3 elements:  
1. Increasing Queensway's influence as a network  
2. An adaptive transformation process  
3. An adaptive investment strategy (inspired by Maslow's theory of human motivation)

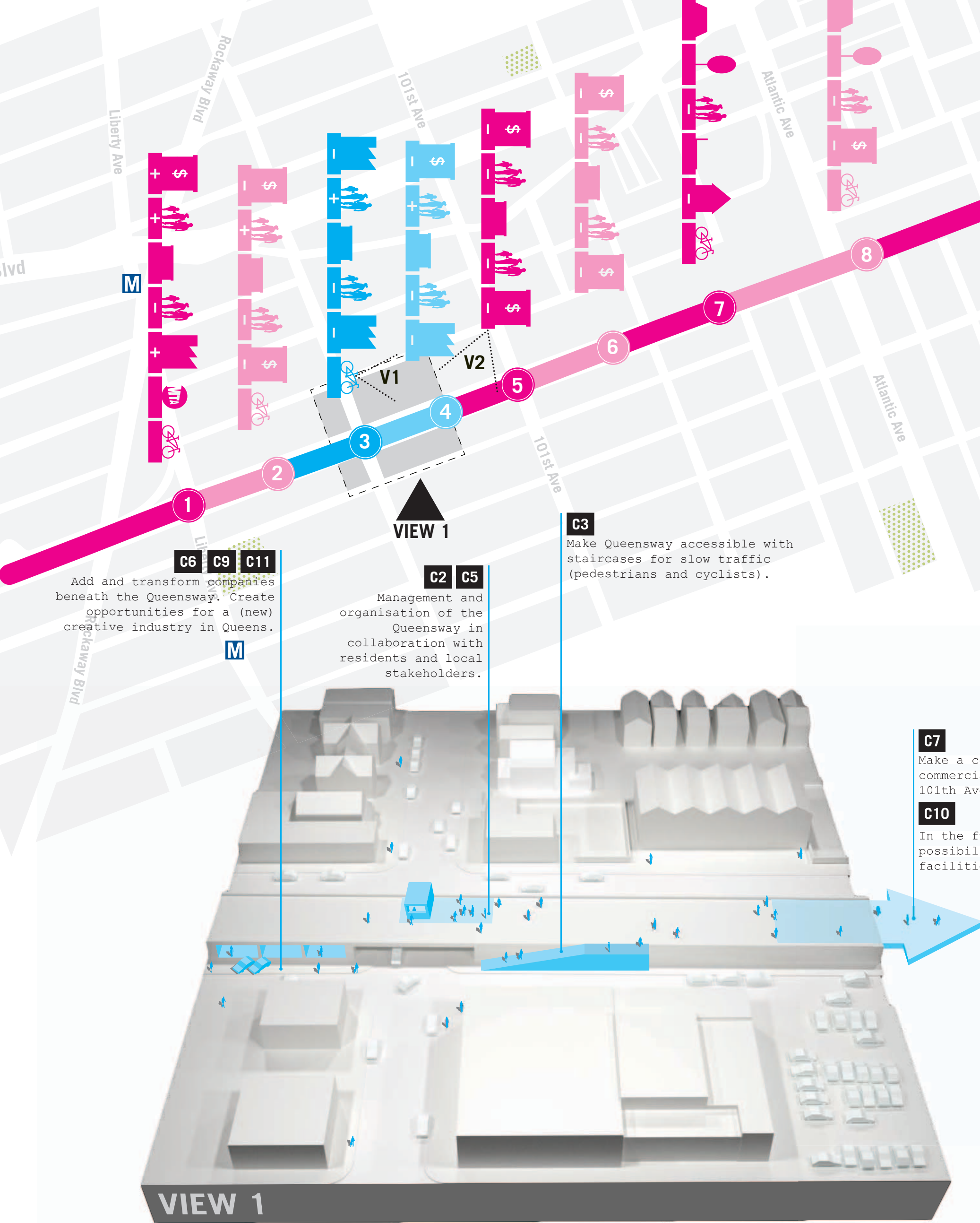
**1. Increasing Queensway's influence as a network**  
Our suggested small transformations and the cycling and pedestrian link make facilities (shops, bars, etc) in the areas surrounding the line more accessible to the inhabitants and visitors of Queens. Therefore the Queensway becomes a physical network, linking all areas surrounding this former railway.

**2. An adaptive transformation process**  
The strategy of succession takes place in small steps. This makes it easier to connect with local wishes and urgencies. The components become more complex and expensive as they increase. The first components are quick win's and easy to implement. They are the driving force for other developments on and around the Queensway.

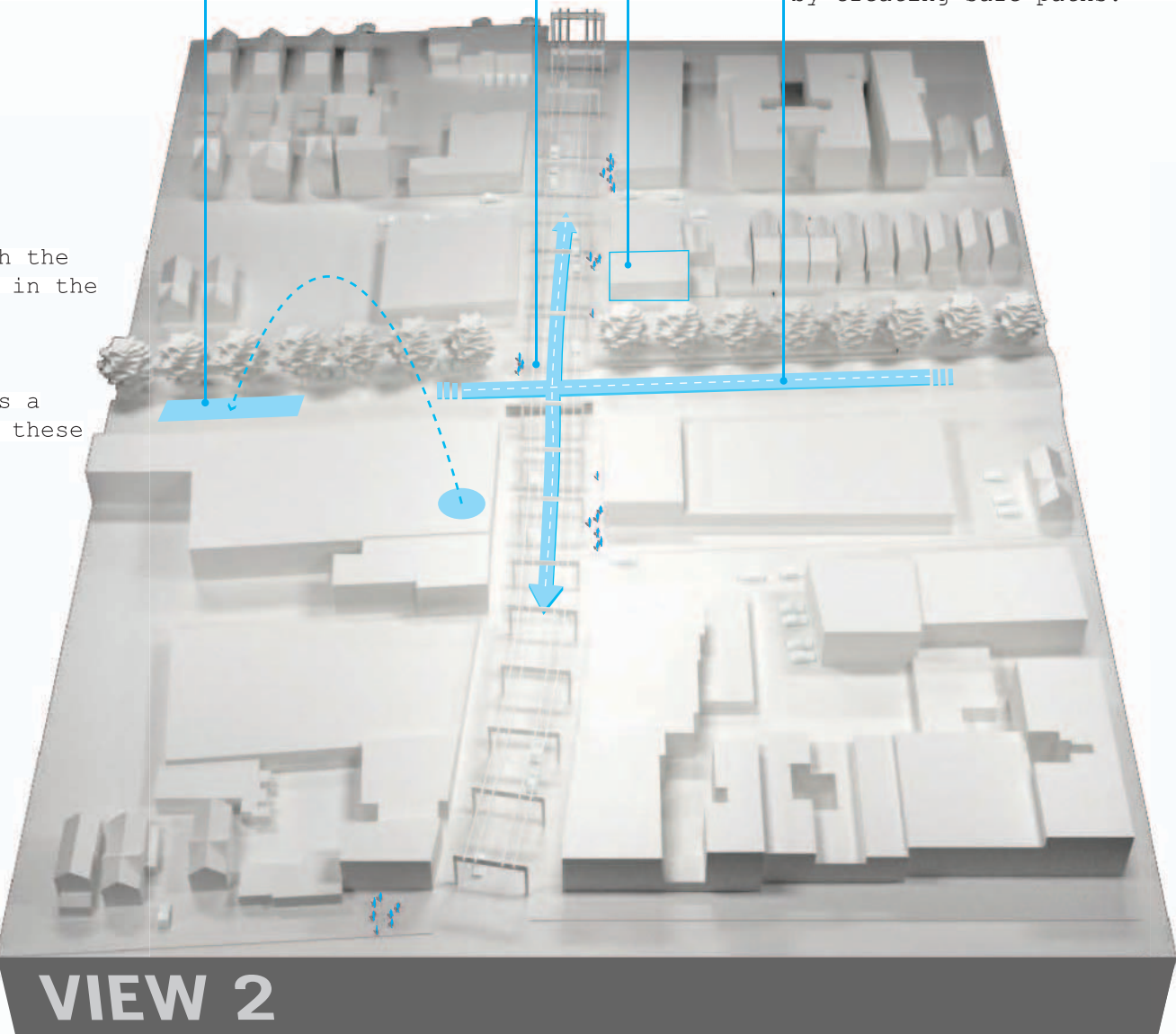
**3. An adaptive investment strategy**  
The investment strategy is consistent with the transformation process. The intended early investors are residents and local entrepreneurs. Based on Maslow's theory of human motivation five steps are distinguished (see pyramid model on this panel). Most areas alongside Queensway start on the safe and functional step. This method gives an inside view in which areas what kind of investment is needed.

Matrix	1	2	3	4	5	6	7	8	9	10	11	12	13	14	15	16	17	18	19	20	21	22	23	24	25
C1																									
C2																									
C3																									
C4																									
C5																									
C6																									
C7																									
C8																									
C9																									
C10																									
C11																									

- C1 Increase accessibility 'Zone Queensway' ('ZQ') by removing physical barriers
- C2 Increase usability 'ZQ' by the management of the site
- C3 Increase accessibility 'ZQ' and relationship with the environment by establishing and / or renewing networks
- C4 Total redesign of the public space and the 'ZQ'
- C5 Increase usability 'ZQ' by civic and entrepreneurial initiatives and / or participation processes
- C6 Create new facilities 'ZQ' by civic and entrepreneurial initiatives and / or participation processes
- C7 Strengthen the connection between the 'ZQ' and the important networks in the area (based on area plan)
- C8 Intensify the existing facilities in the 'ZQ' by using small-scale civic and entrepreneurial initiatives
- C9 Transformation of existing facilities in the 'ZQ' to new facilities (commercial and public) for hub development
- C10 Transformation of facilities in the surrounding area (commercial and public) serving the experience of the Queensway
- C11 Transformation of existing housing typologies

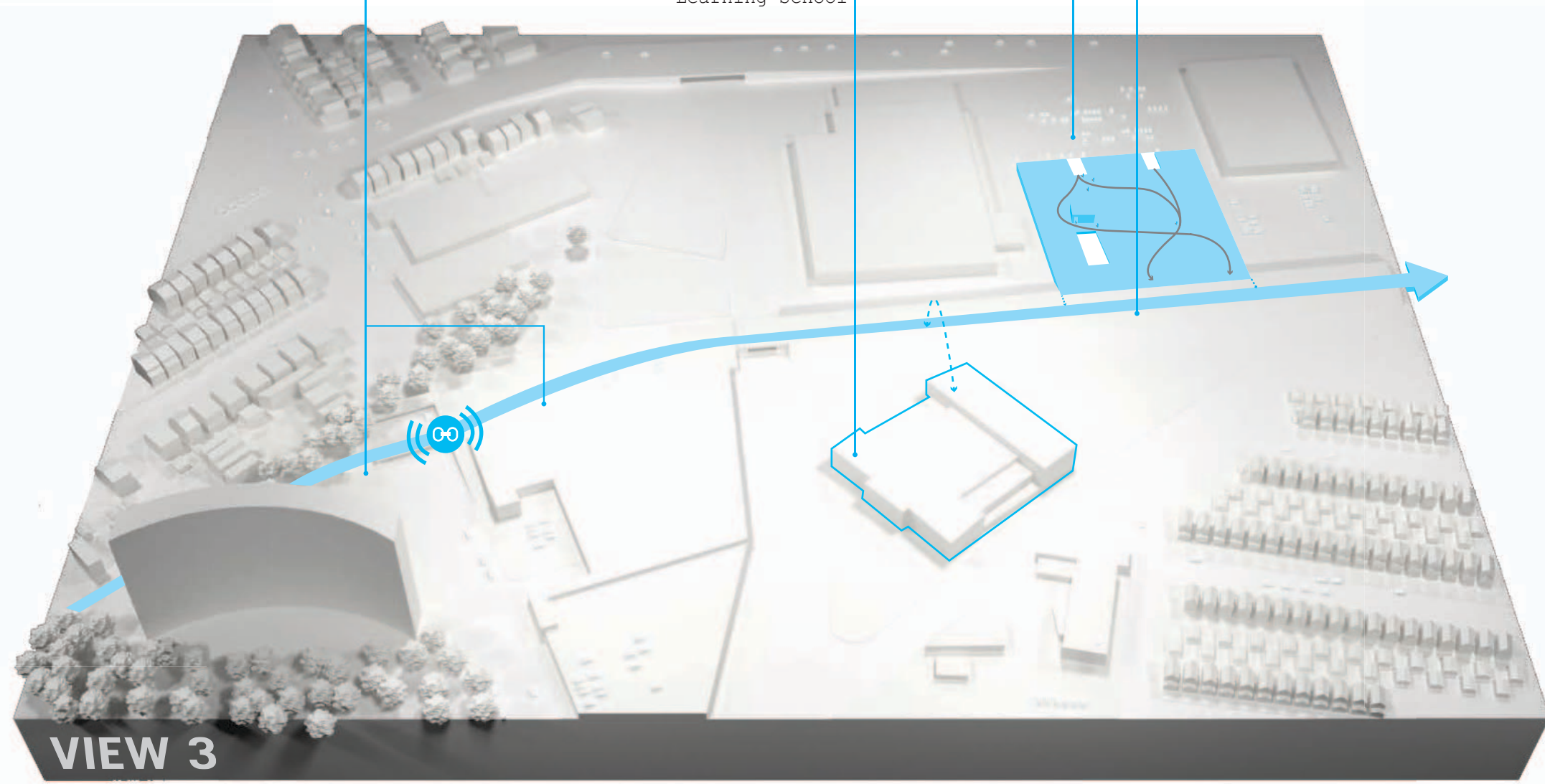


**C7**  
Make a connection with the commercial facilities in the 101st Avenue.  
**C10**  
In the future there is a possibility to expand these facilities.



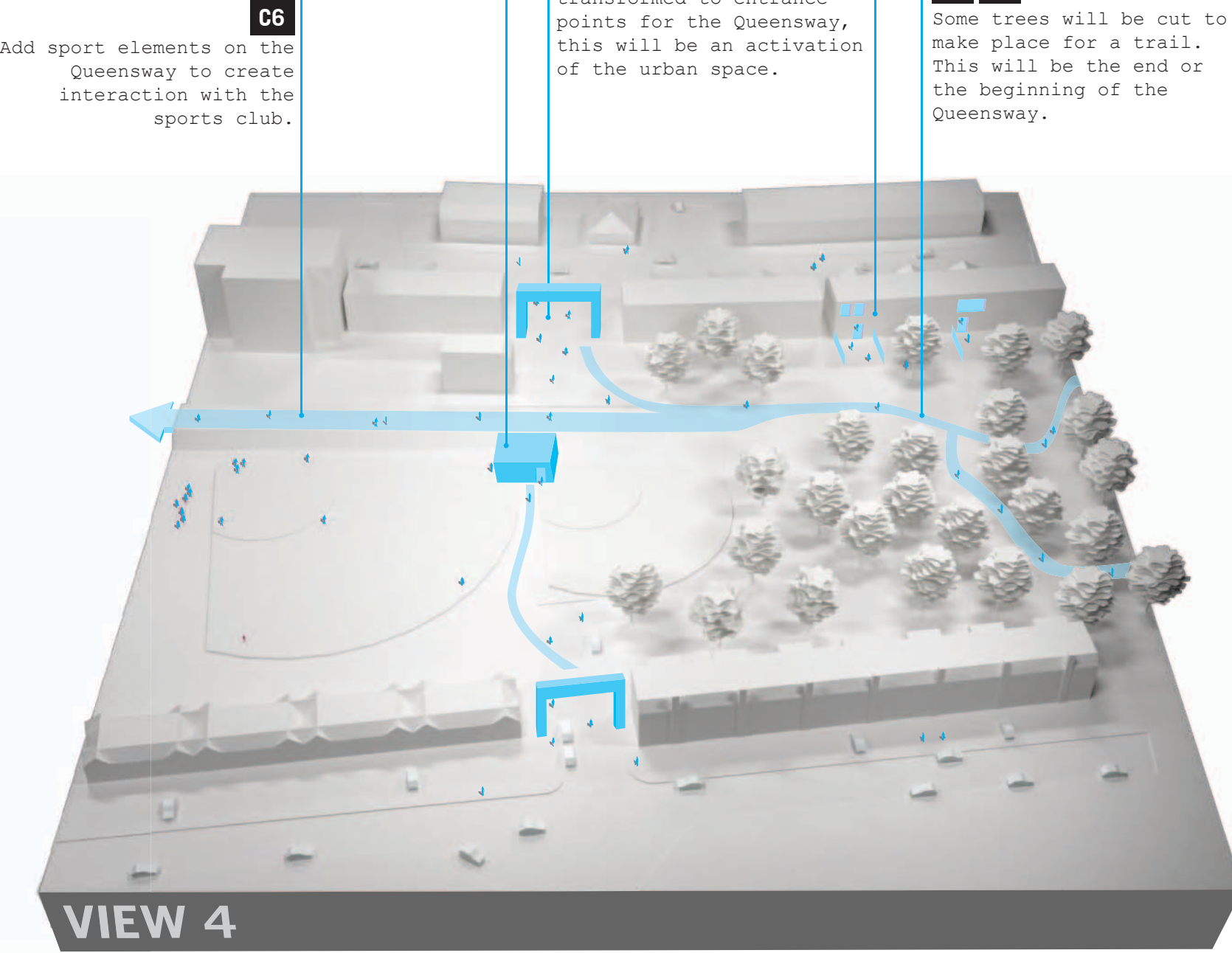
VIEW 2

**C8 C9 C10**  
Intensify and transform facilities in the vicinity of the Queensway.  
**C2**  
Make Queensway accessible by cutting several trees.  
**C3**  
Provide access for pedestrians and cyclists by creating safe paths.

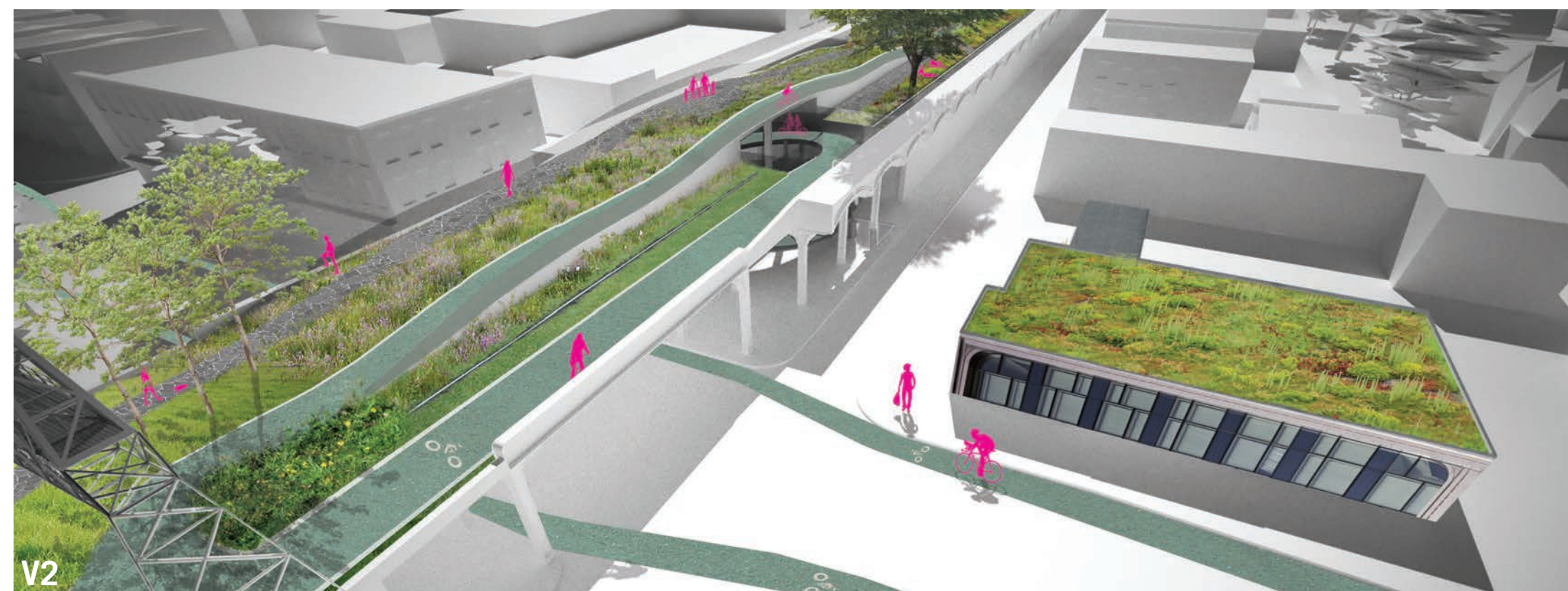


VIEW 3

**C7**  
Create a green roof on top of the parking lot which extends the Queensway to the Woodhaven Boulevard  
**C8 C10**  
The new roof makes place for new public space and commercial activities.  
**C1**  
Remove fences to make the Queensway accessible.  
**C2**  
Remove trees to make space for a continuous path. (reuse trees for furniture on the Queensway)



VIEW 4



V2



V1

## Timeline

